



MAINTENANCE WORKSHOP MANAGEMENT SOFTWARE FLEET MANAGER

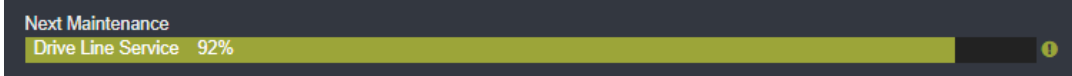
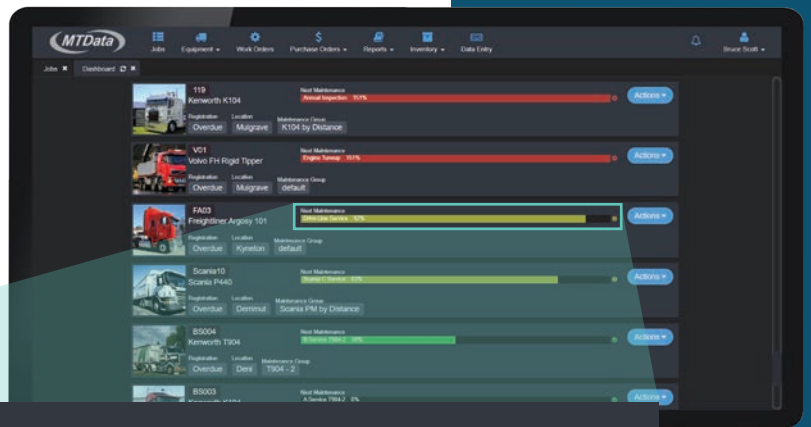
Staying on top of your vehicles' maintenance needs when you have a large fleet is easy and effortless with Fleet Manager. Fleet Manager is a supported workshop management program to keep you updated with all your vehicle services, schedules and logs a history of services for each vehicle. You'll know the ins and outs of every vehicle in detail and have peace of mind that your fleet is well maintained for the highest performance. The Fleet Manager software features:

- Work Orders
- Purchase Orders
- Parts and Inventory Management
- Job Cards and Mechanic Scheduling
- Faults, Scheduled & Preventative Maintenance
- Servicing Checklists
- Daily Checks, Tyre Checks, Brake Checks
- Registration Management
- Meter & Fuel Entry
- Reports & Dashboards

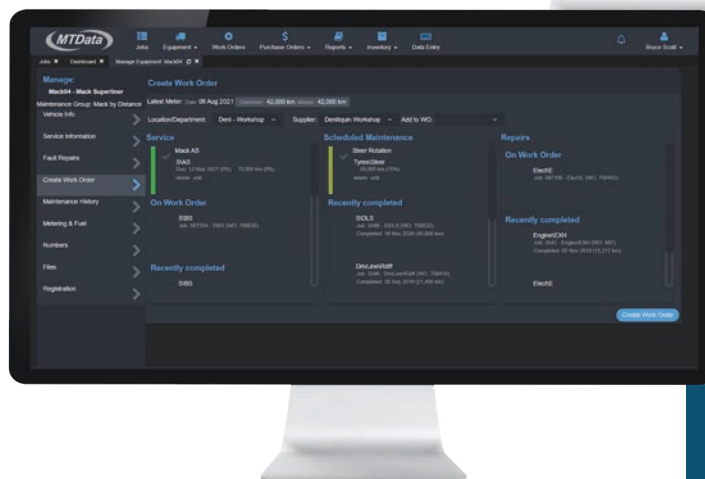


Plan and schedule maintenance services

Limit vehicle downtime and plan ahead for any fixes and services.



Fleet Manager's web-based platform allows integration with Hawk-Eye and MTData driver apps Talon and Swift for a powerful centralised system with even more data including faults & defects reporting from drivers, live odometer & engine hours and fuel declaration reporting.



Manage spare parts inventory & appointments with mechanics

Order parts to maintain inventory on hand. Manage your service bookings with mechanics all in one place with tasks, notes, times and vehicles.



www.mtdata.co.nz
0800 683 282
enquiries@mtdata.co.nz

